



**WELCOME TO THE  
THREE LAKES  
MODEL RAILROAD CLUB**  
WISCONSIN'S ONLY 100% NMRA RAILROAD CLUB



- High Tech and Old School
  - Model Building

Paul Wussow and Friends in the  
Three Lakes Model Railroad Club



**WELCOME TO THE  
THREE LAKES  
MODEL RAILROAD CLUB**  
WISCONSIN'S ONLY 100% NMRA RAILROAD CLUB



- **Supporting Model Railroading and Model Railroaders Of The North Woods**
- The Three Lakes Model Railroad Club (TLMRC) was established to promote the hobby of model railroading for all ages. From Thomas Tank Engine to classic Lionel we invite all gauges and scale molders to join us in our love of trains.
- In the greater Three Lakes area we have participating members with layouts under construction in Lionel, On30, S, HO, HOn3 and N gauge and a display layout with 2 scales and 2 gauges operating.



**WELCOME TO THE  
THREE LAKES  
MODEL RAILROAD CLUB**  
WISCONSIN'S ONLY 100% NMRA RAILROAD CLUB



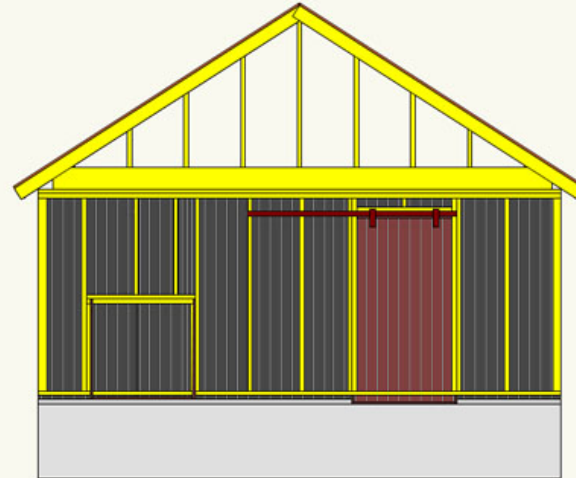
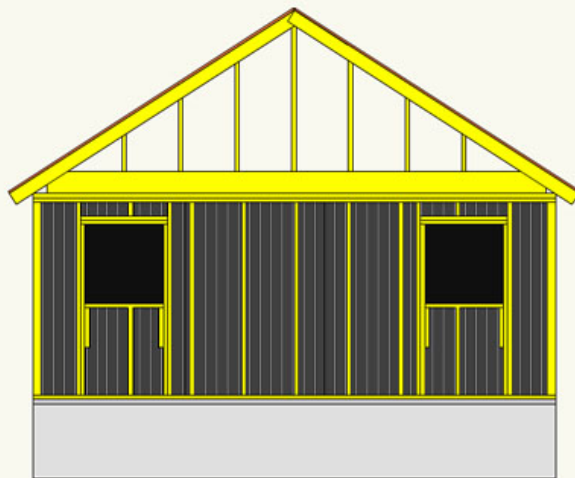
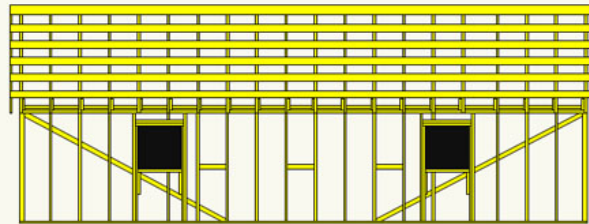
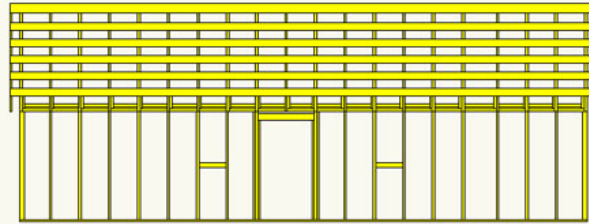
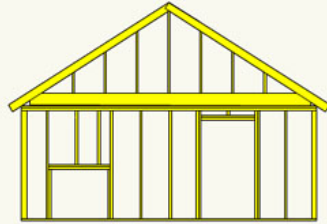
- We have members and contributors who live in 5 Regions and 7 Divisions in the US and communications with Europe, Asia, and Australia.
- Interactive Video Clinics have been given from Japan and Germany and around the US while members travel for the Government.

# Measuring Up

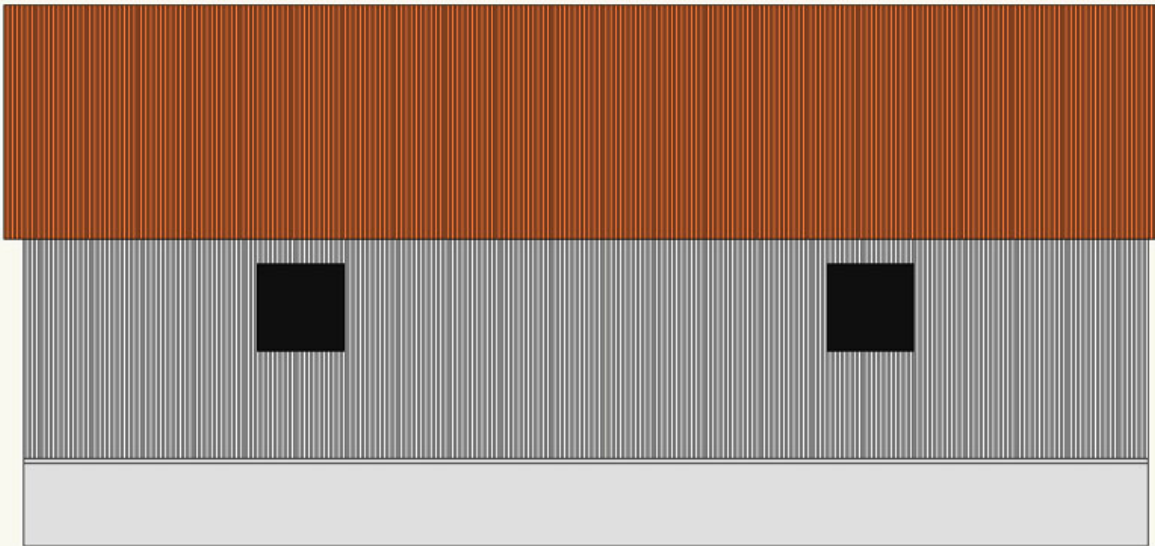
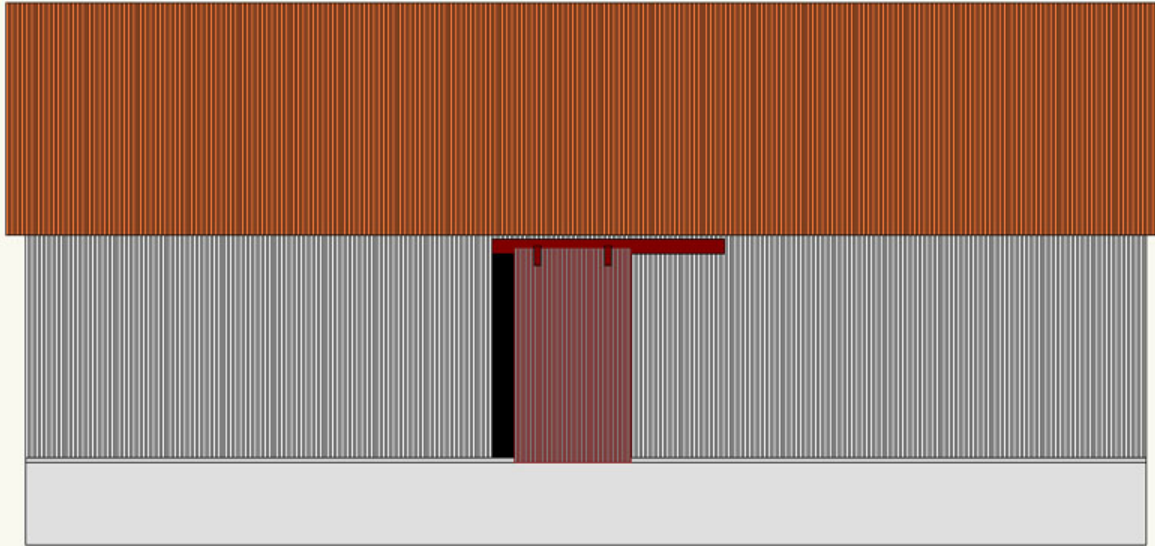


**As part of the Measuring Up article we gathered dimensions of the warehouse.**

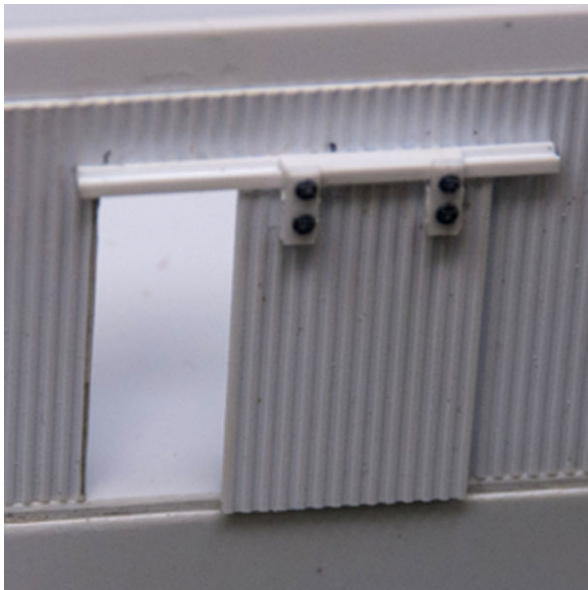
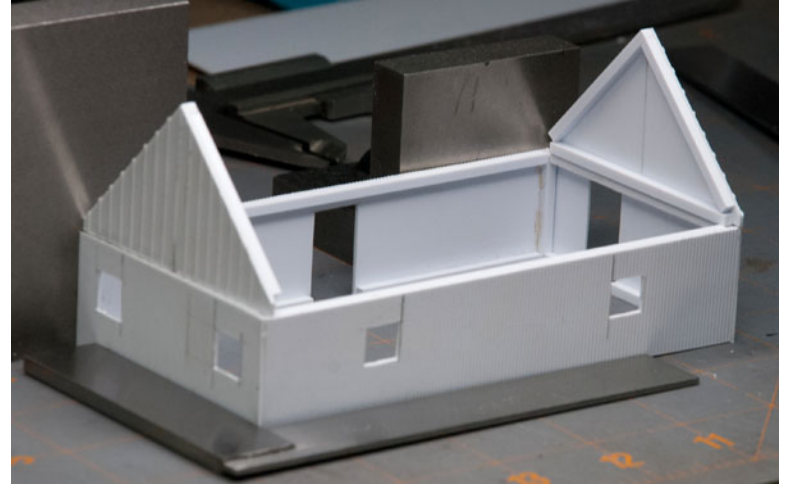
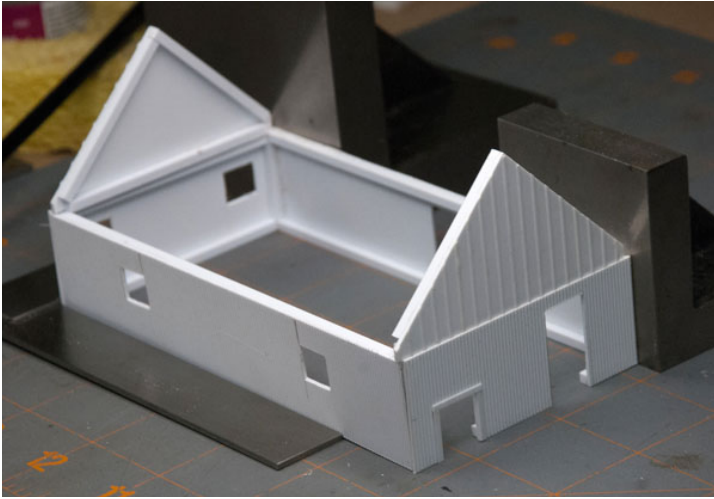
# Drafting



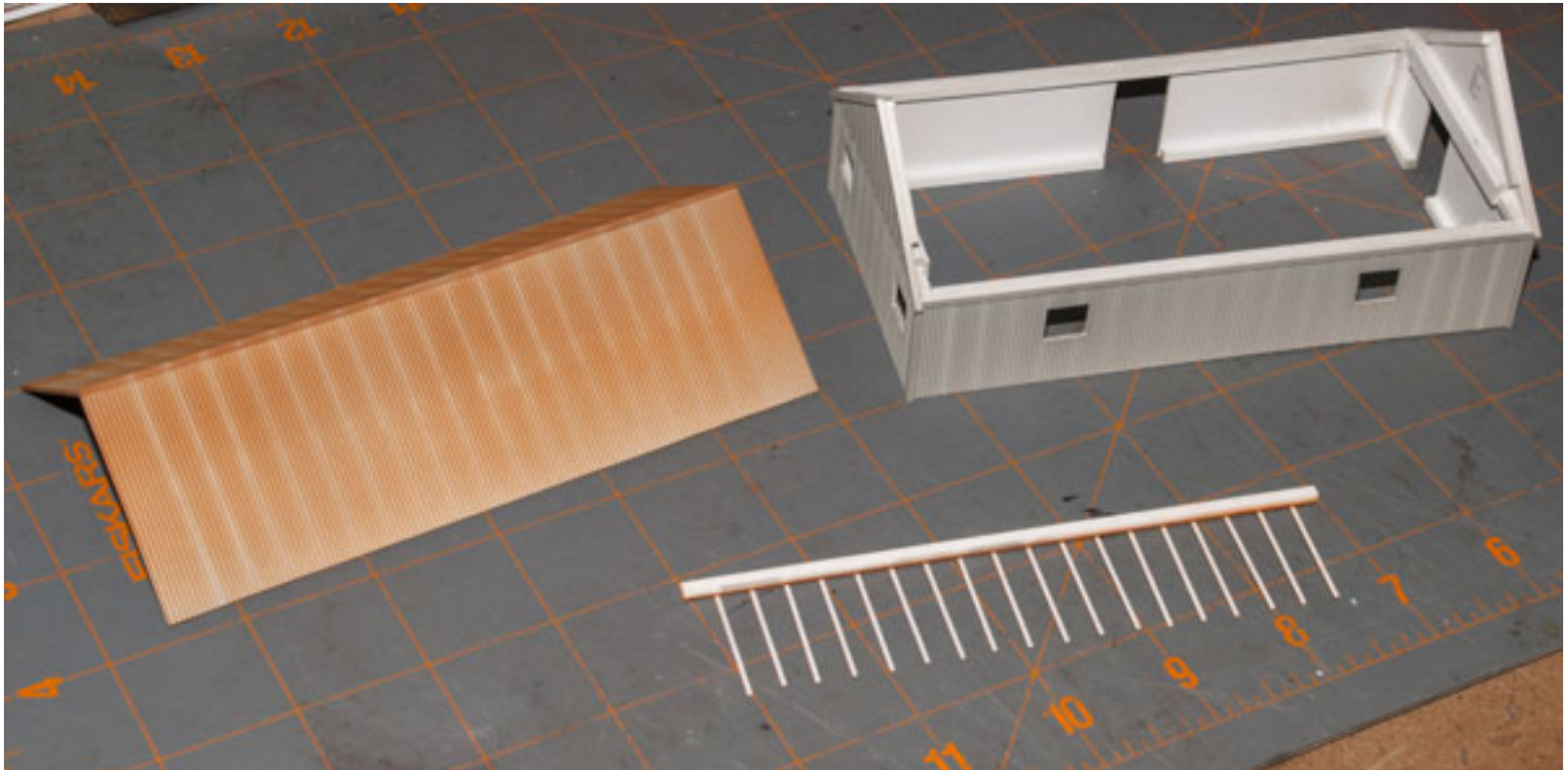
# Drafting



# Construction

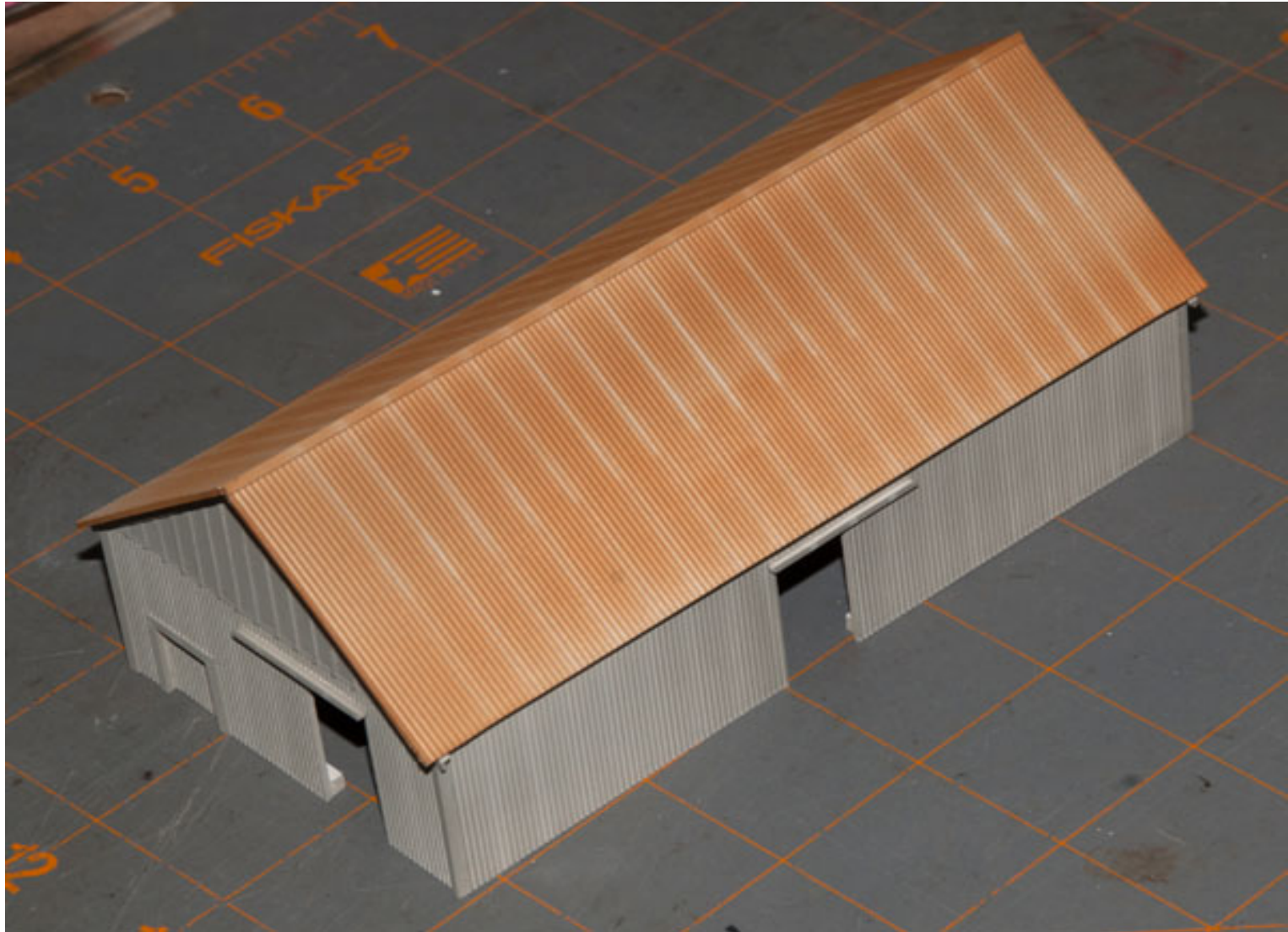


# Finish





# Finish



# Ready for Additional Weathering



# Winter Project

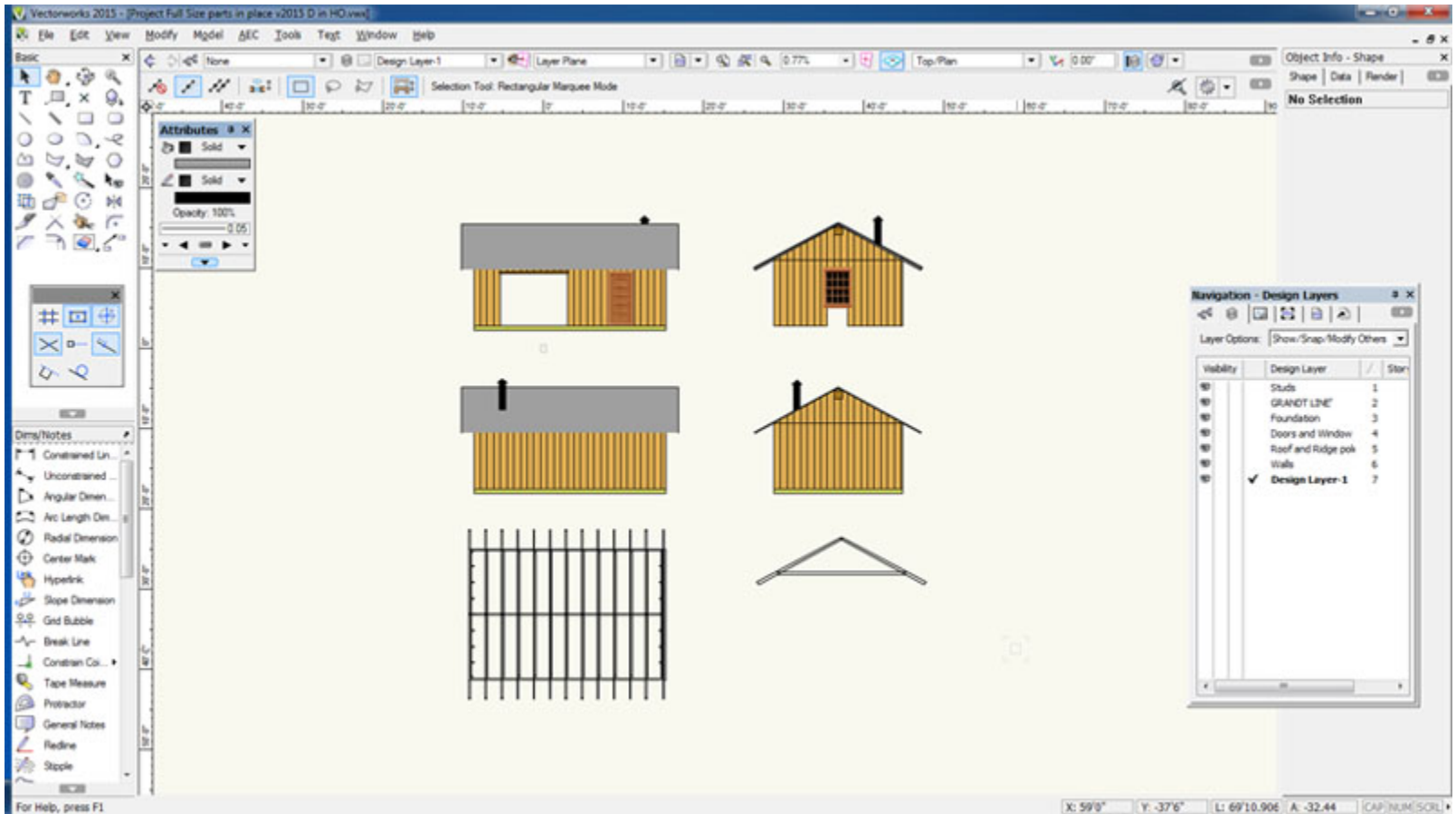


This structure was designed over 20 years ago by Al Potts, MMR

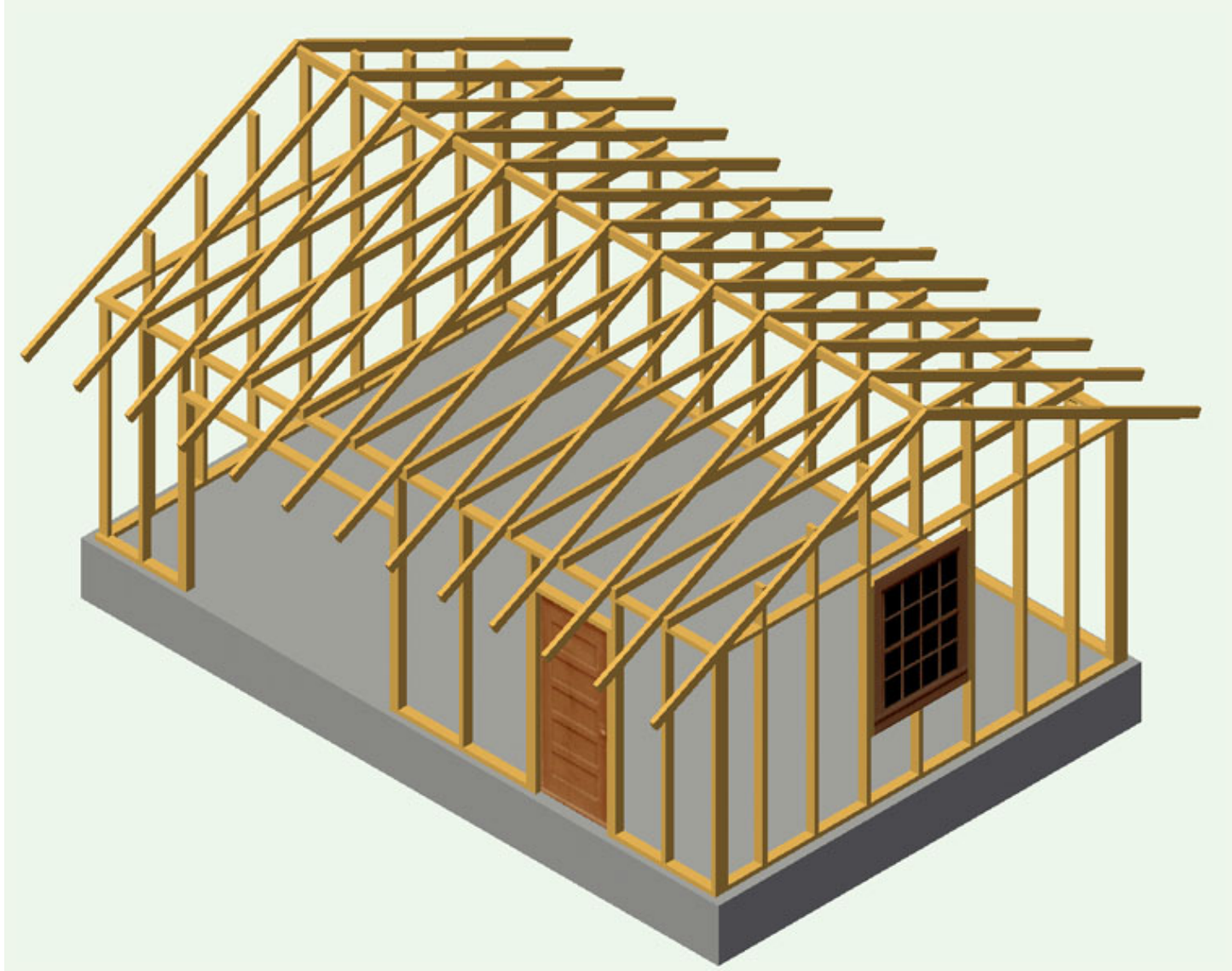
# Winter Project

- The project was a hands on clinic by Al Potts, MMR in the 1990s for the SCWD and he supplied me with a printed copy of his instructions and dimensions of the prototype structure.
- From these dimensions I drafted a new prototype set of drawings and scaled them to O, S, and HO Scale.

# Vectorworks Computer Drafting



# 3D Vectorworks Computer Drafting



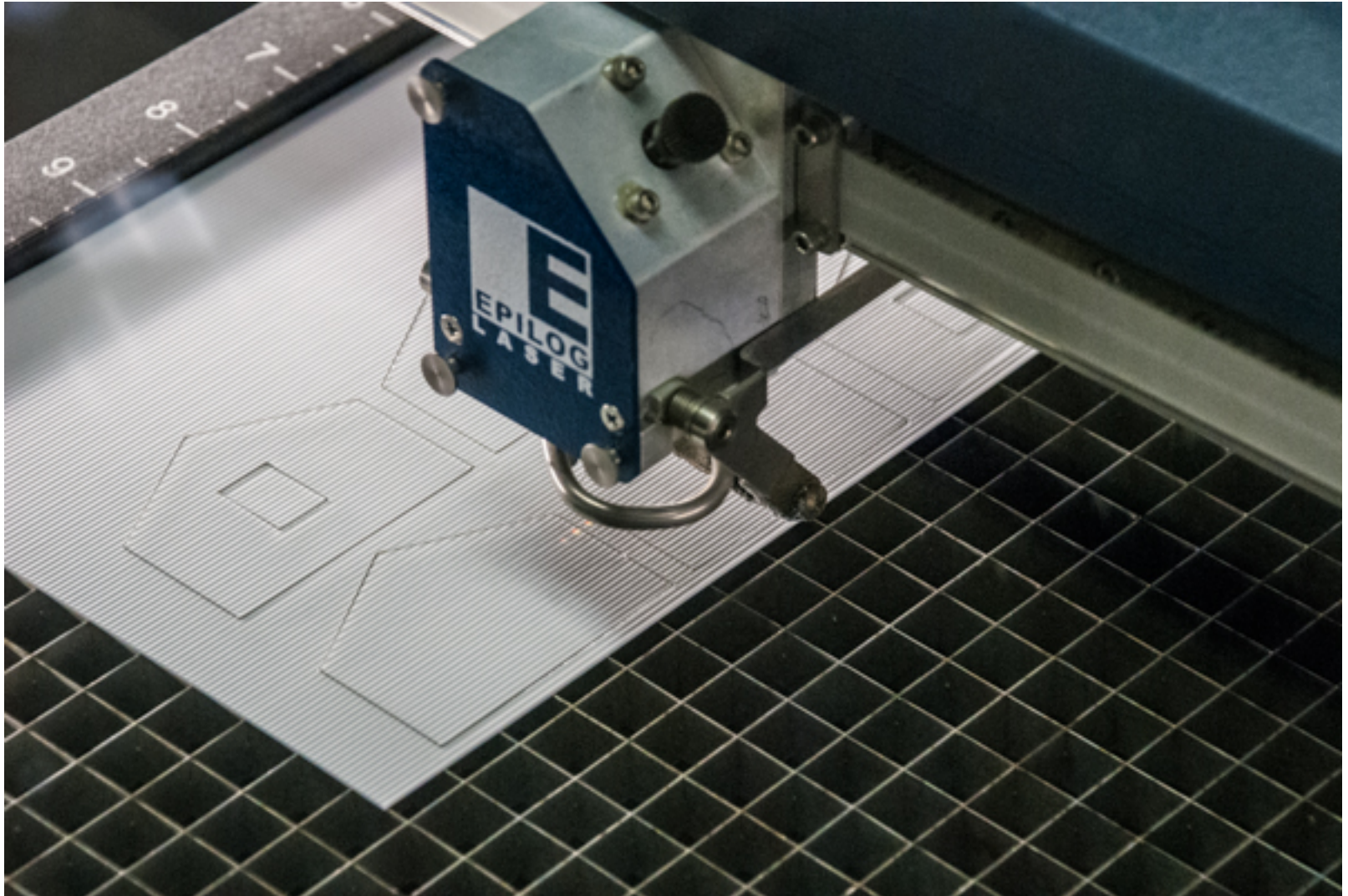


# FAB LAB

Three Lakes



# Construction (cutting with a laser)





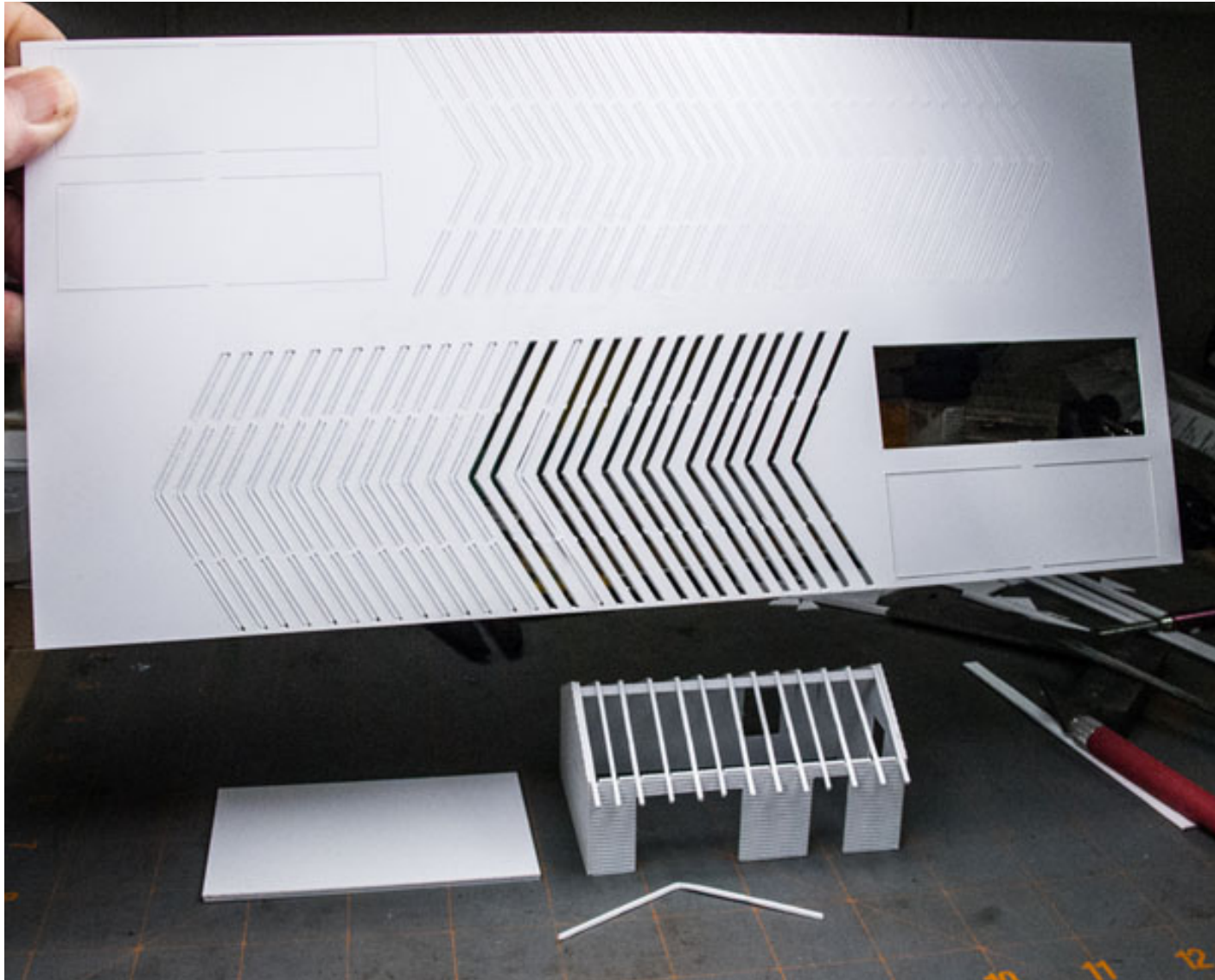
# HO Scale Results



# Construction (Like a scratch kit)



# Laser Cut Rafters



# Construction (Adding Details)



Finished? Not yet



# Bob Knobbe



# Roofing with Construction Paper



# Interior with office wall





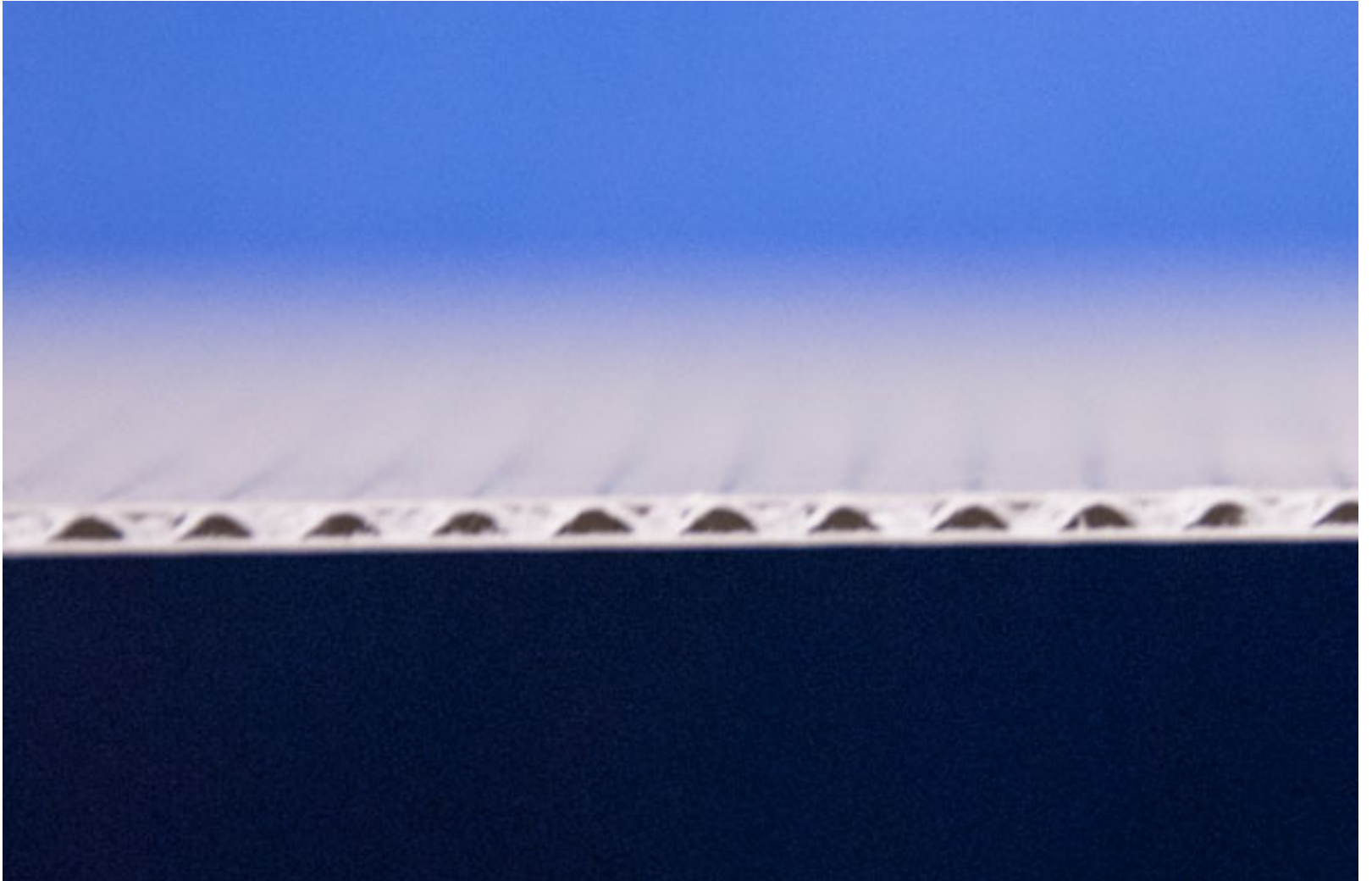
# Paper or Plastic?



# Jack Zimmer Models in Paper



# Corrugated Paper



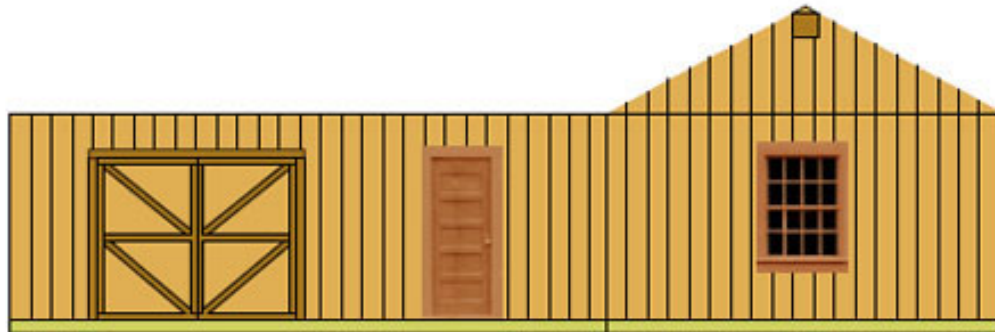
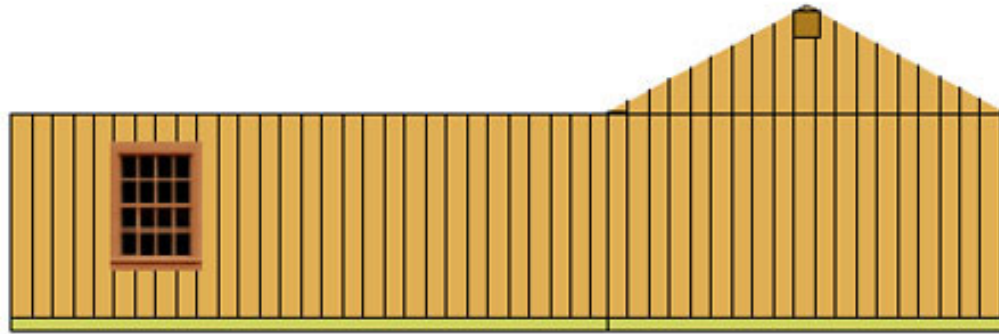
# Double Sided Tape



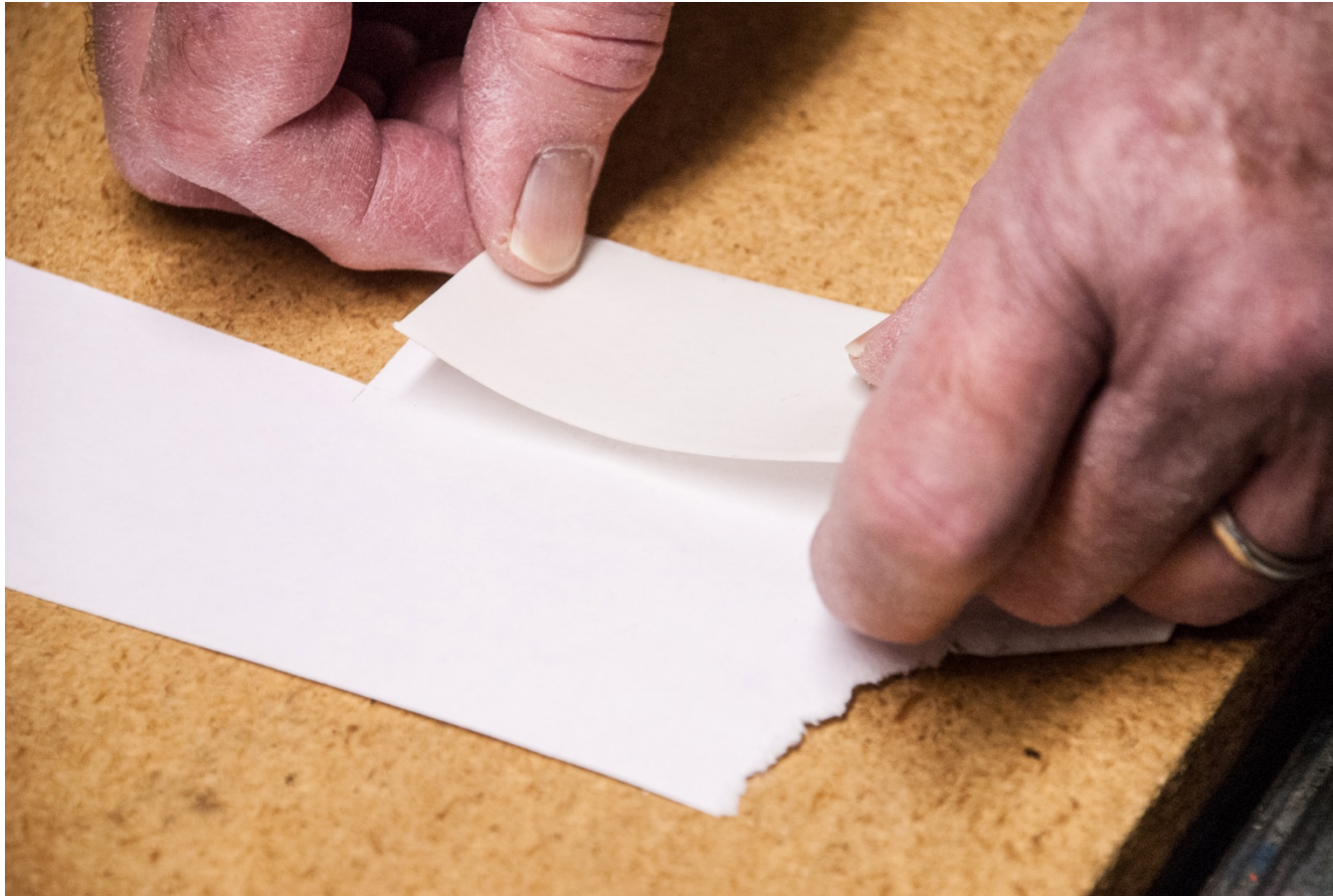
# Double Sided Tape



# Printed Paper



# Double Sided Tape on to the Paper



# Remove the Back of Double Sided Tape

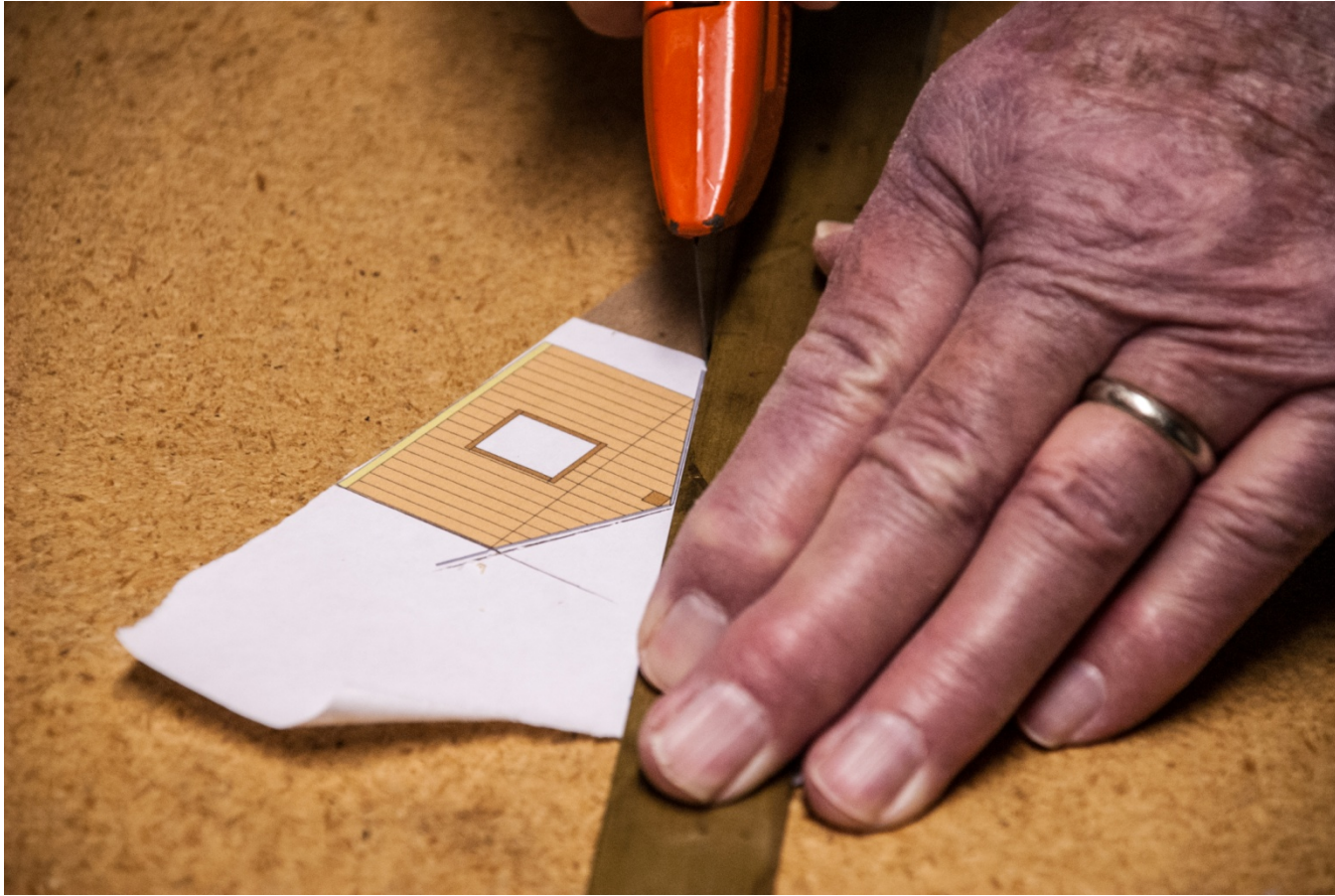




# Place Corrugated Paper on Tape



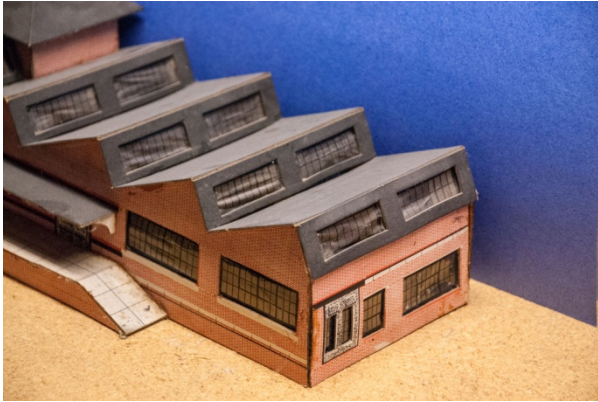
# Cutting out the wall



# We have an end wall



# Paper Structures by Jack Zimmer



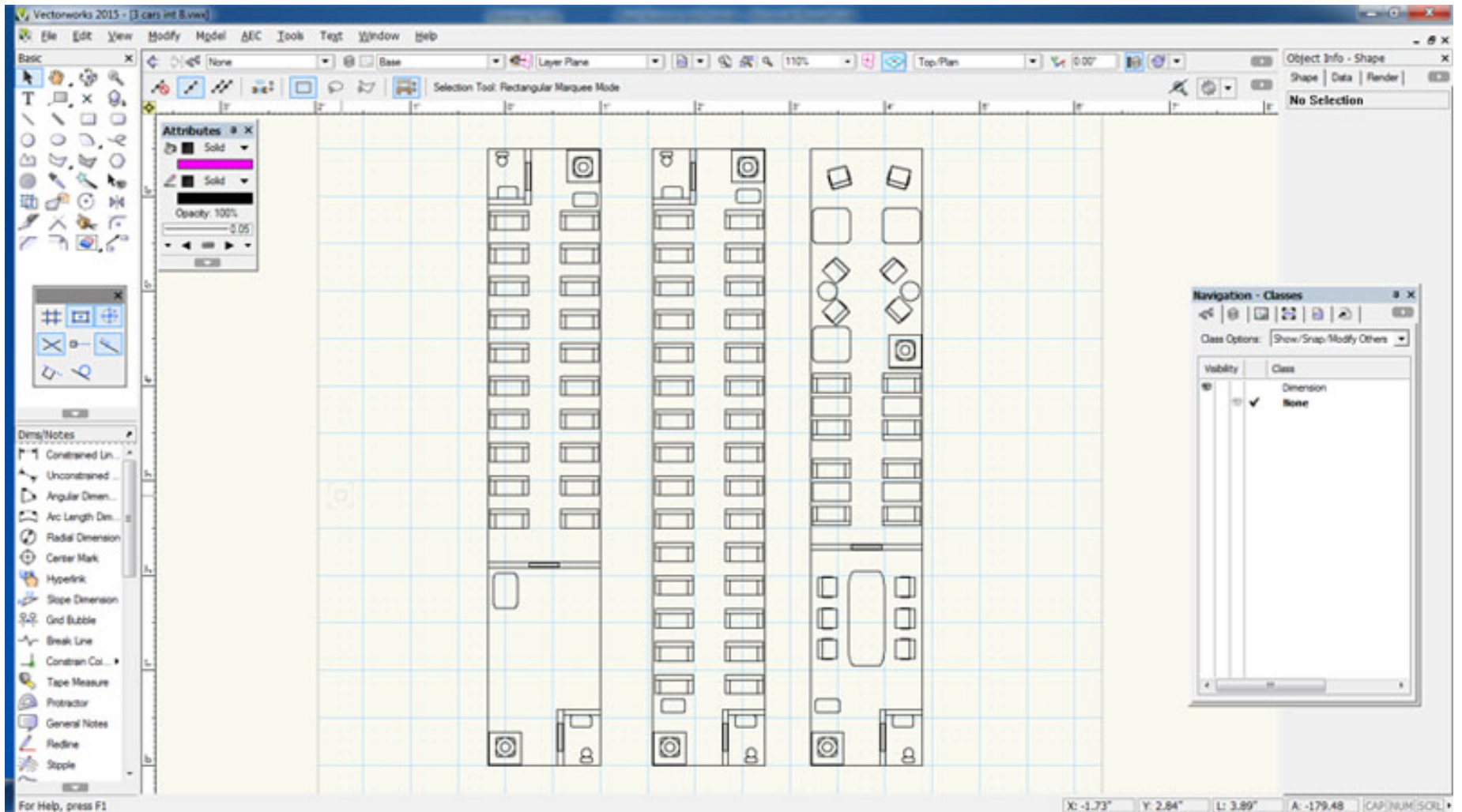
# 3D Printing



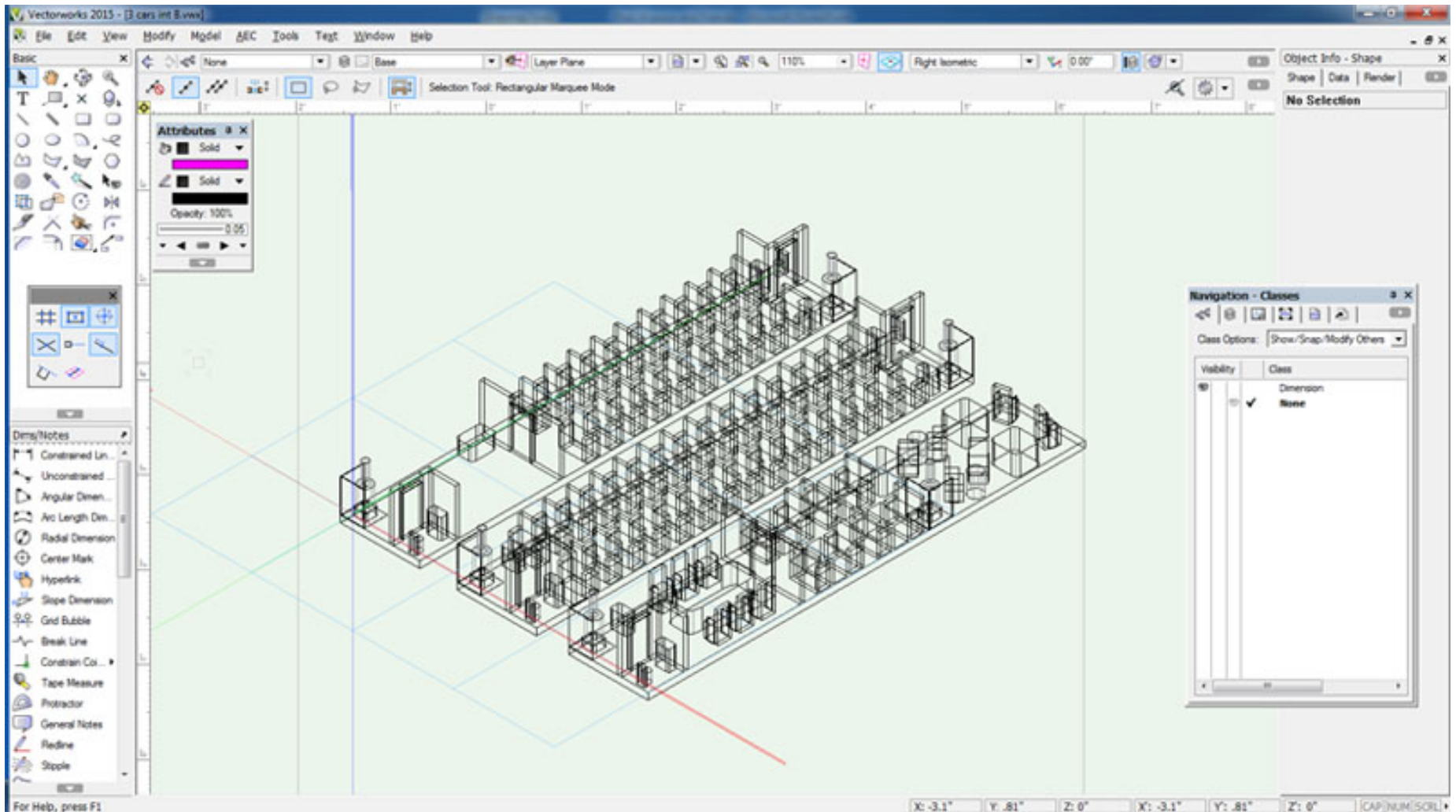
# 3D Printed S Scale window and door



# Drafting for 3D printing 1

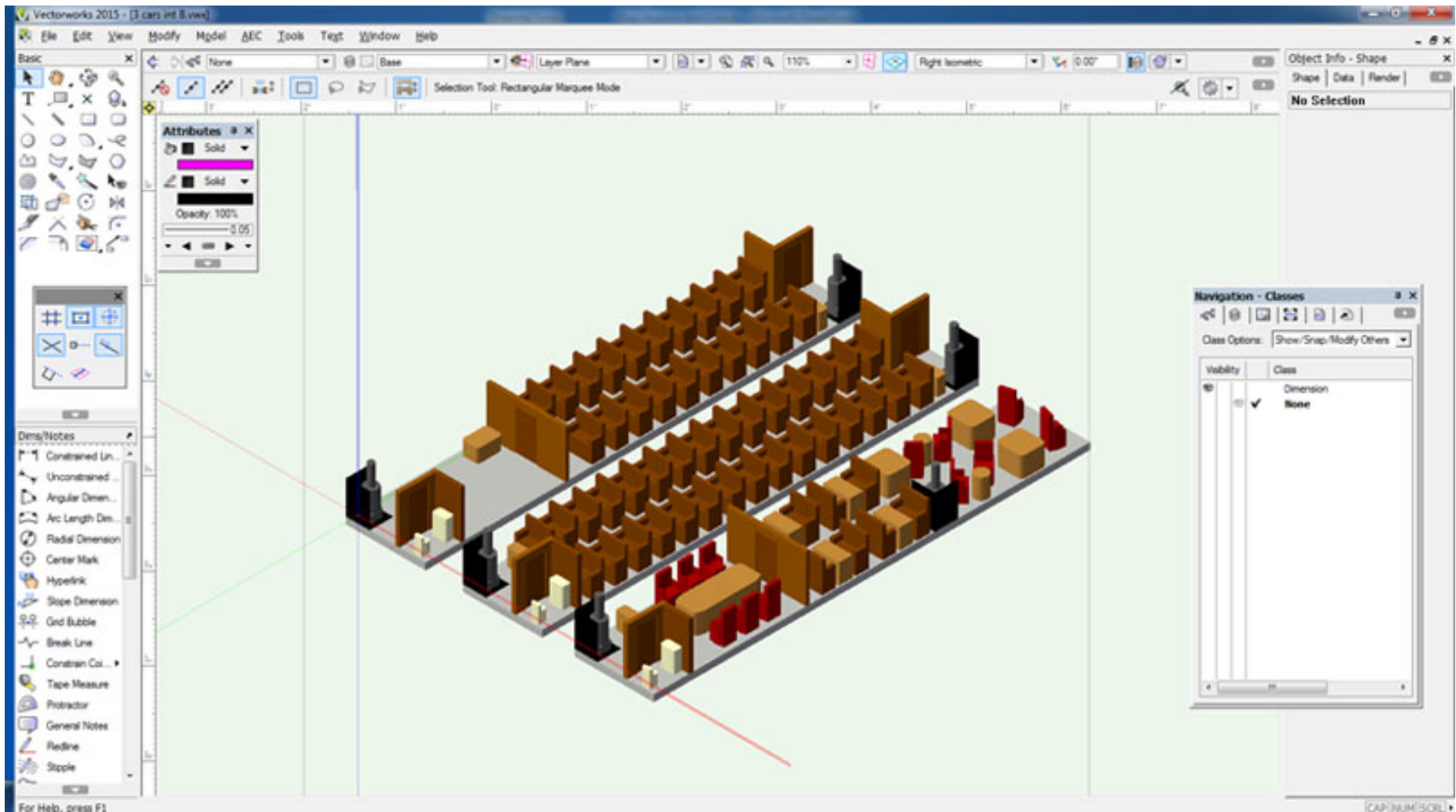


# Drafting for 3D printing 2

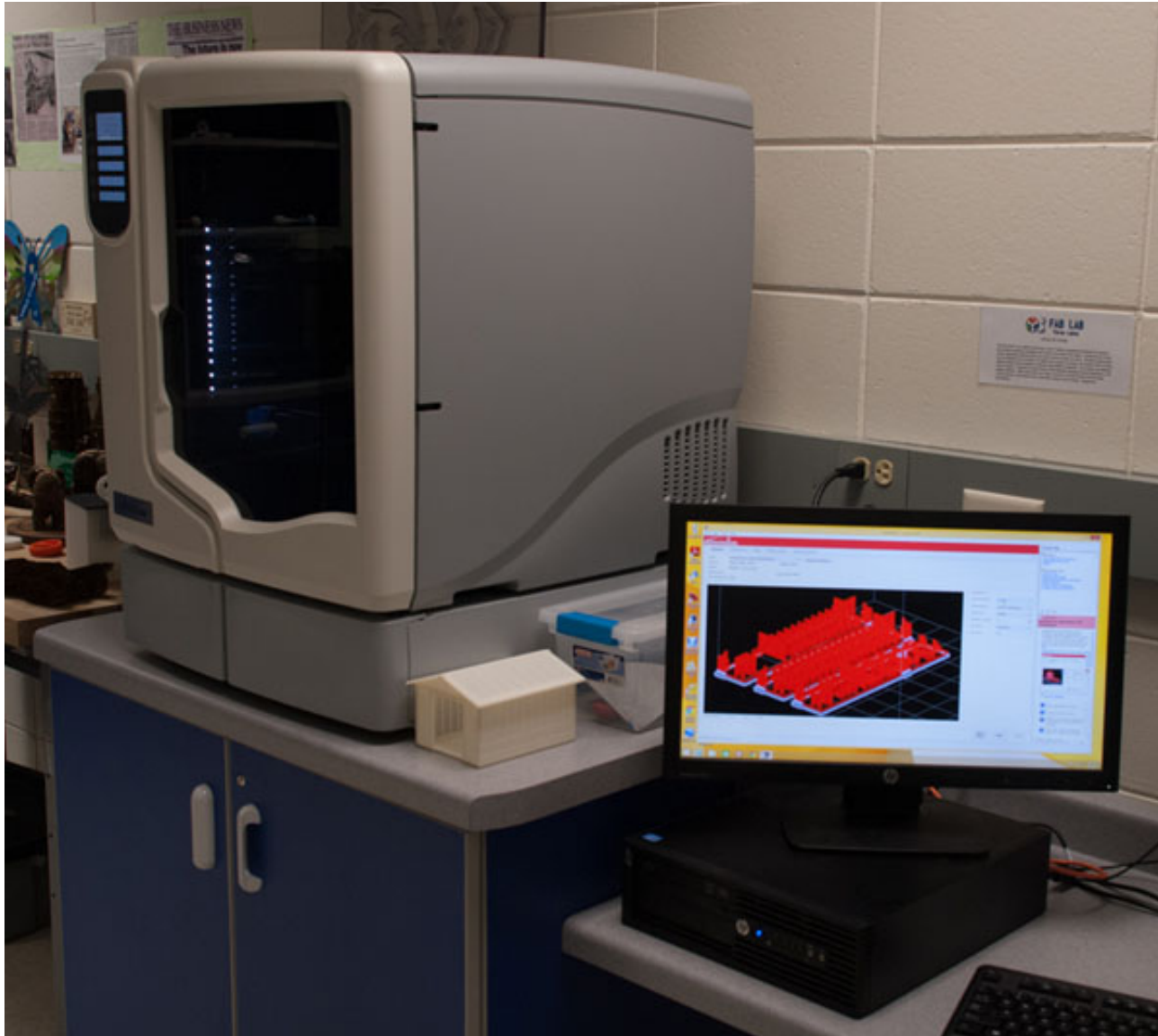




# Drafting for 3D printing 3



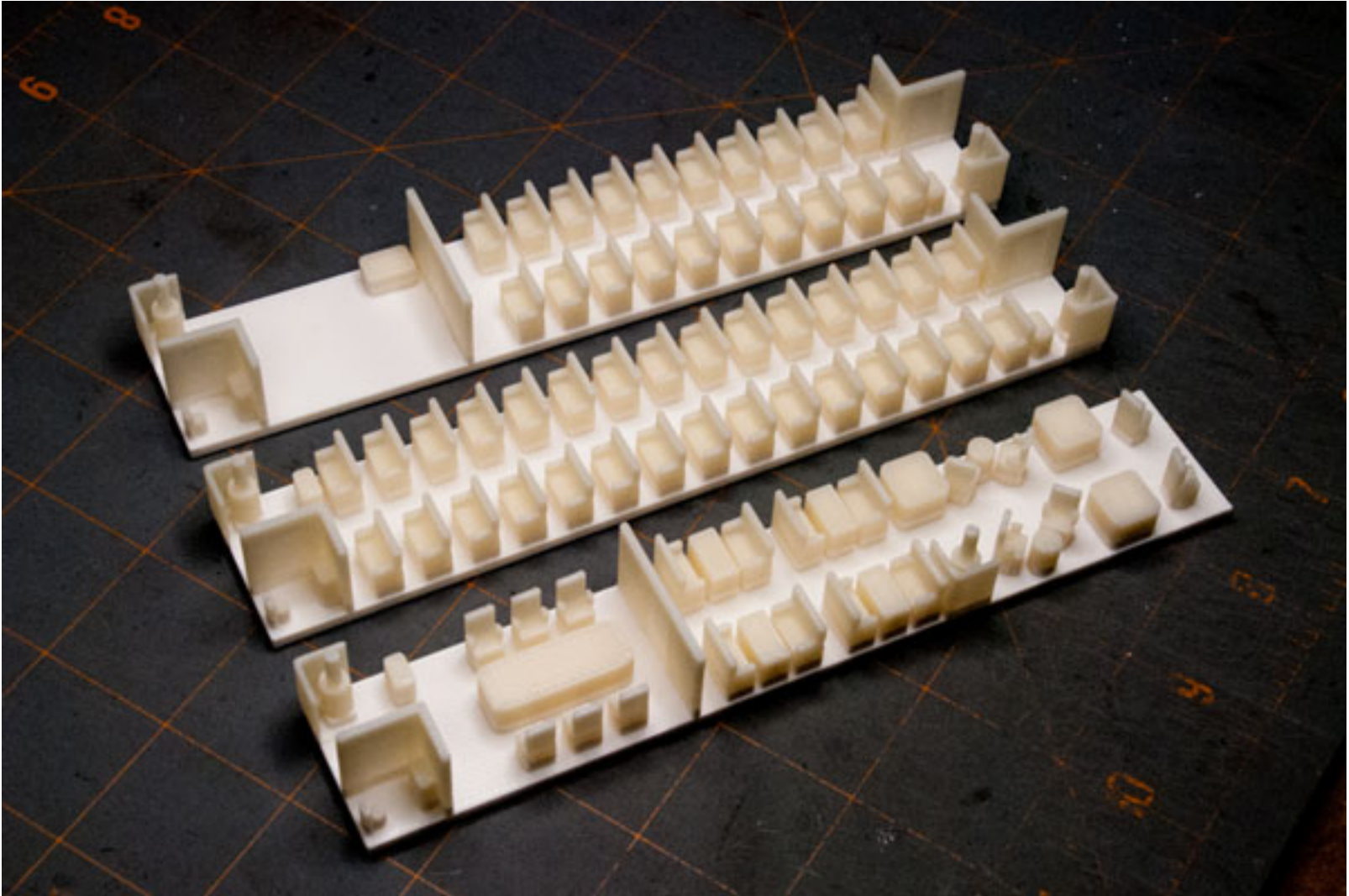
# Convert to .STL File and Load



# Print



Ready for finishing



# Combine



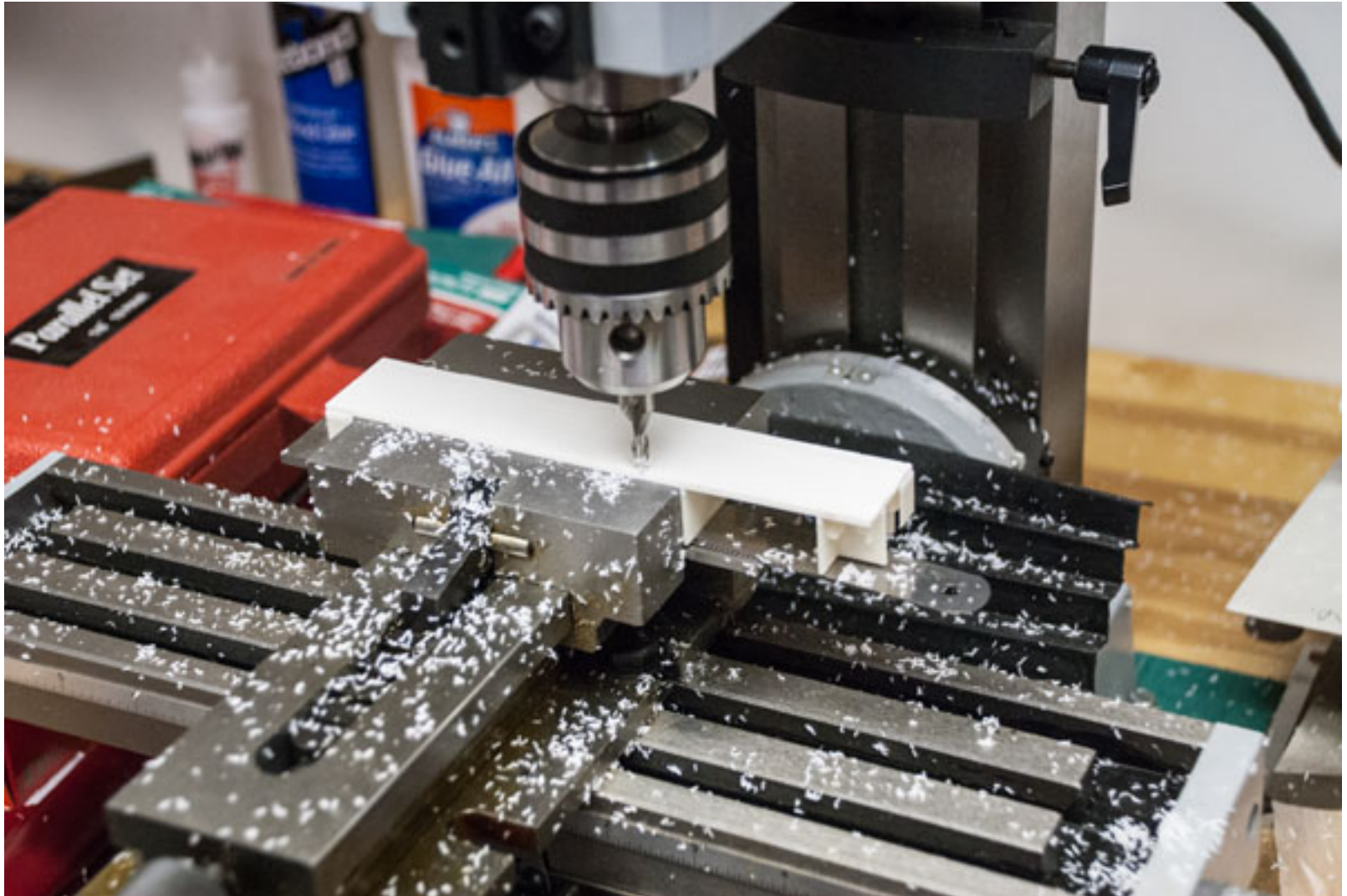
# Coach



# Business Car



# Adjust base of the print





# Reinstall



# Share with others



# Share with others



**WELCOME TO THE  
THREE LAKES  
MODEL RAILROAD CLUB**  
WISCONSIN'S ONLY 100% NMRA RAILROAD CLUB

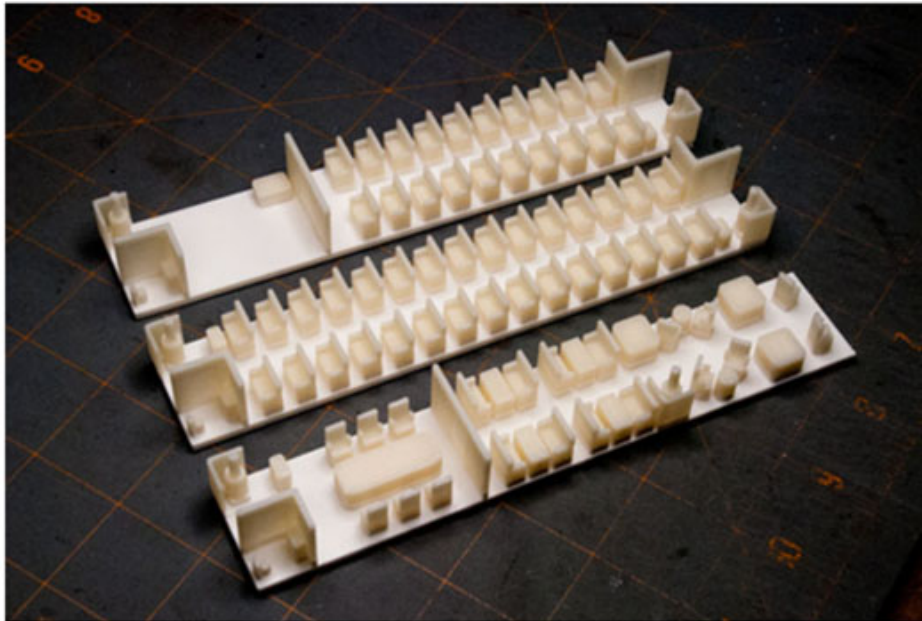


**Supporting Model Railroading and Modeling  
Of The North Woods Railroads**

Made At The Fab Lab



**FAB LAB**  
Three Lakes



**\*\*\*Interior for Open Platform Combine\*\*\***

02/22/15 Edition

**\* NEW Items \***

Introduction

\*Club News Pages\*

Achievement Program

\*\*Paul's Workshop\*\*

Prototype

Layouts

Modules

Meeting the Masters

Clinics on Line

Three Lakes Turn

RRA(Rhineland  
Club)

Northwoods M.R.Club

WINNEBAGOLAND

MIDWEST R...

# Spread the Word



- <http://www.tlmrc.org>

